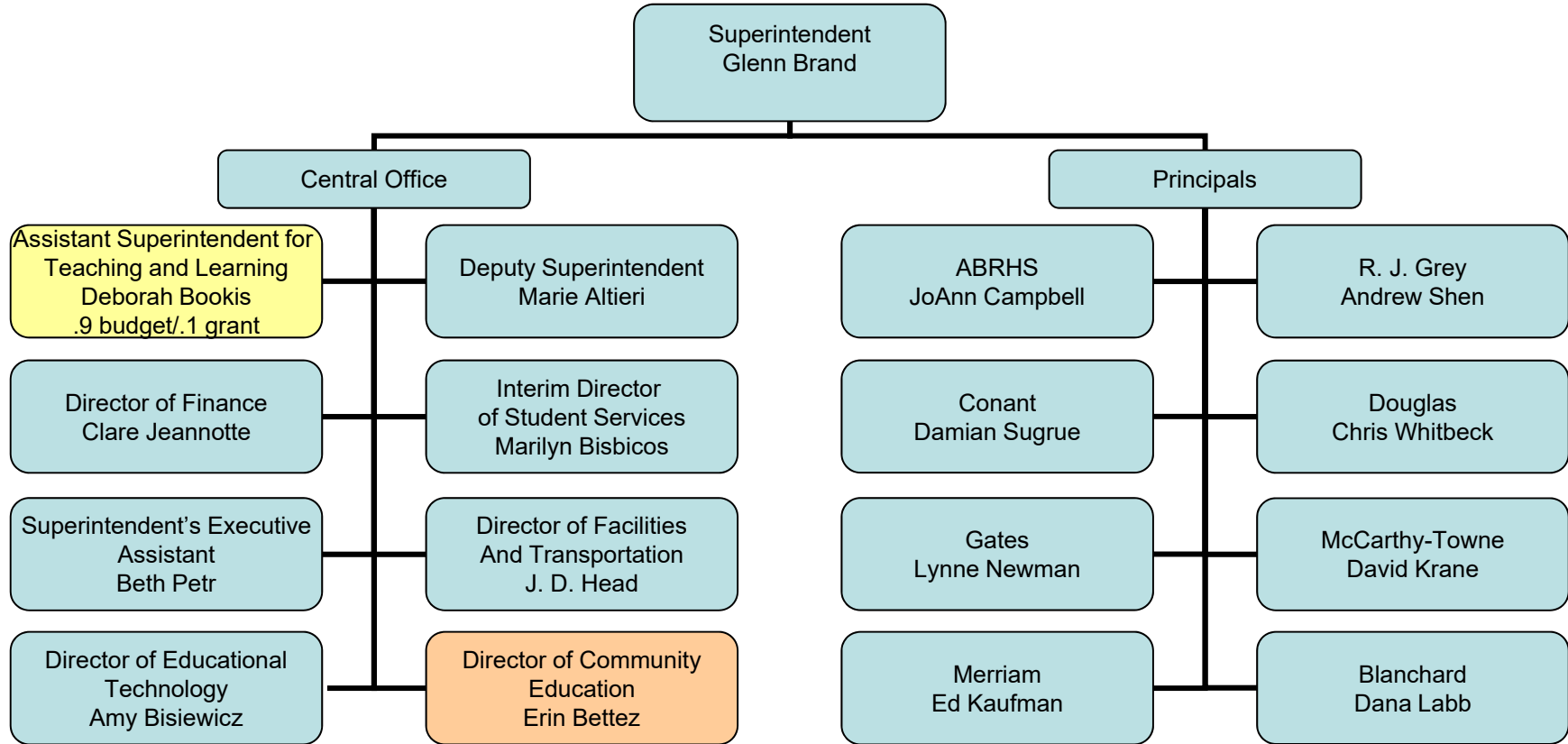


# ABRSD FY '16 Organizational Chart

## Central Office/Principals

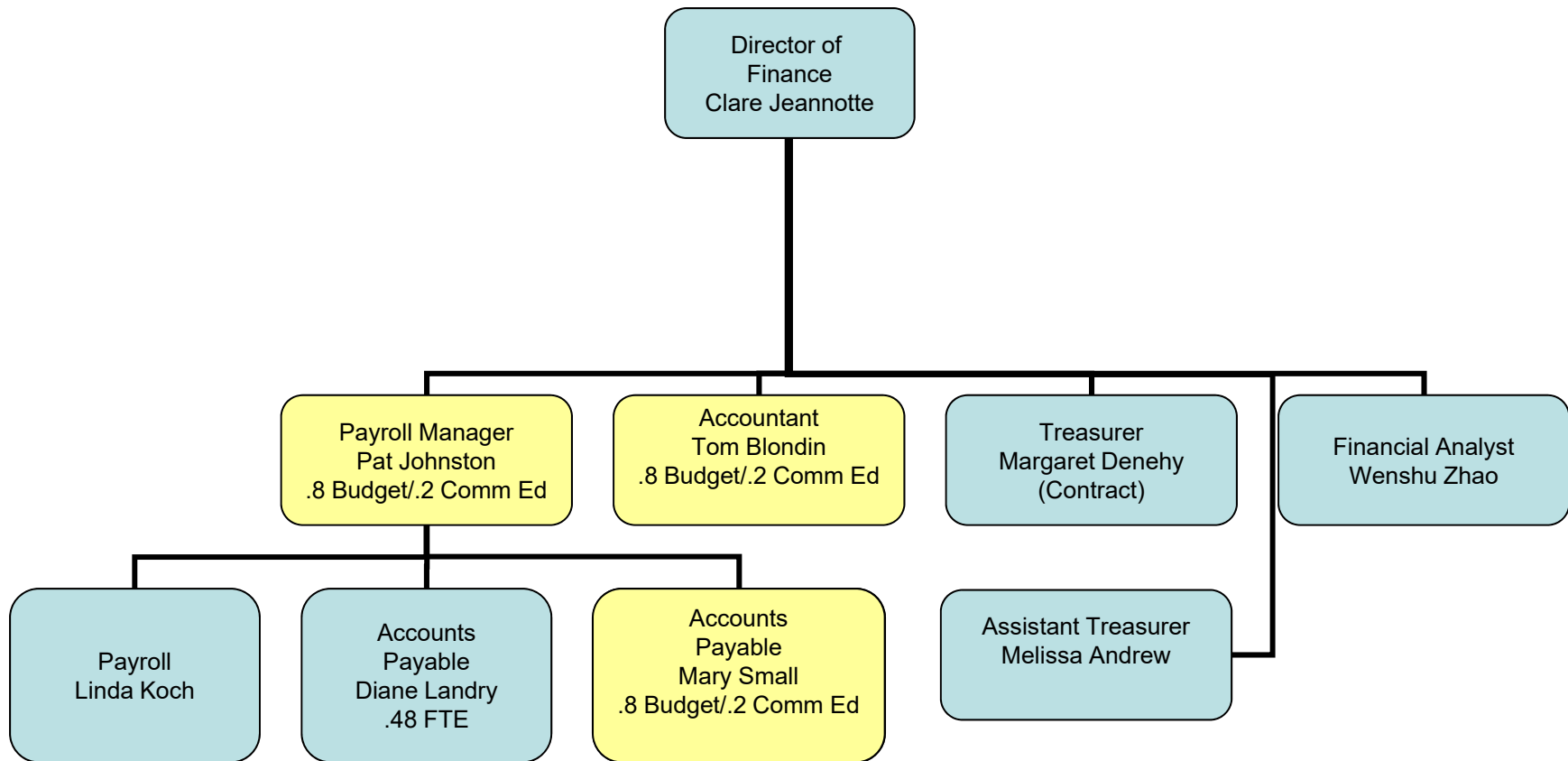


Blue Background = Appropriated Budget

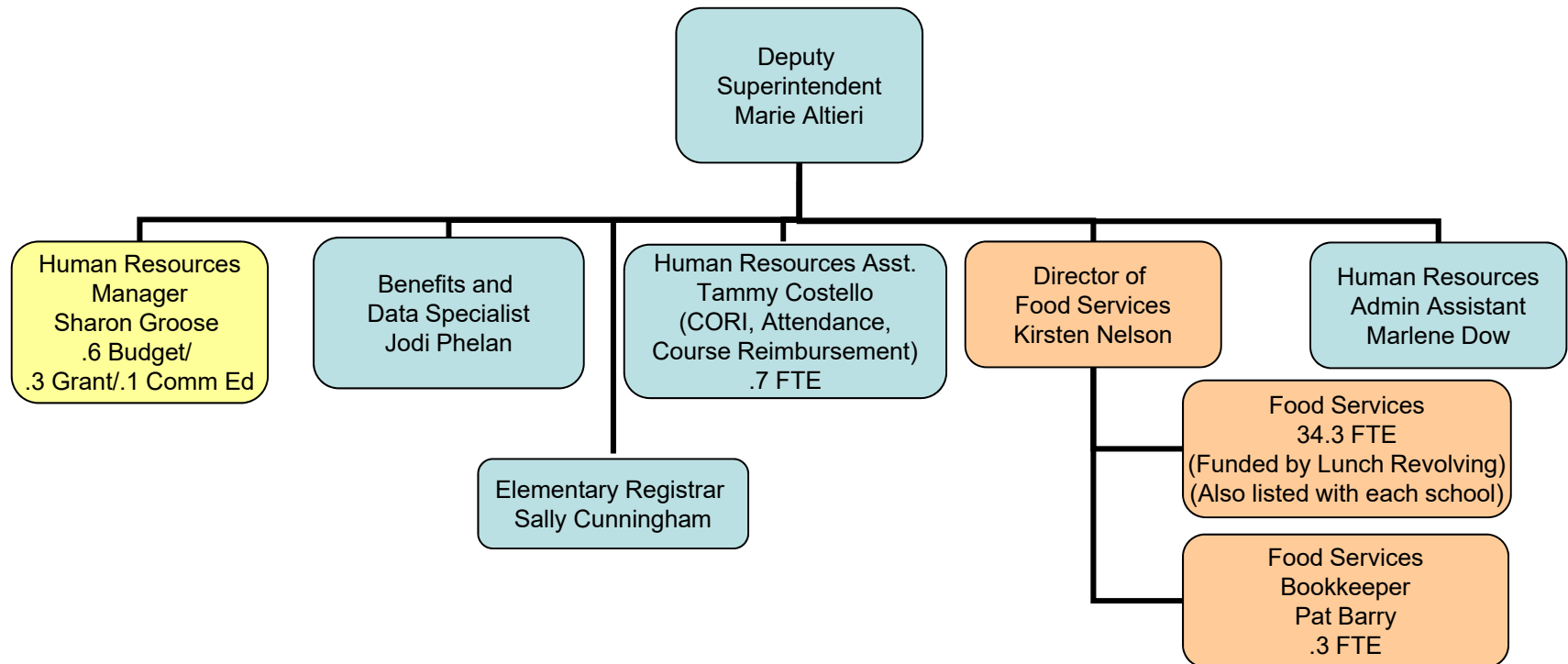
Salmon Background = Funded by other sources

Yellow Background = Partially Funded by other sources

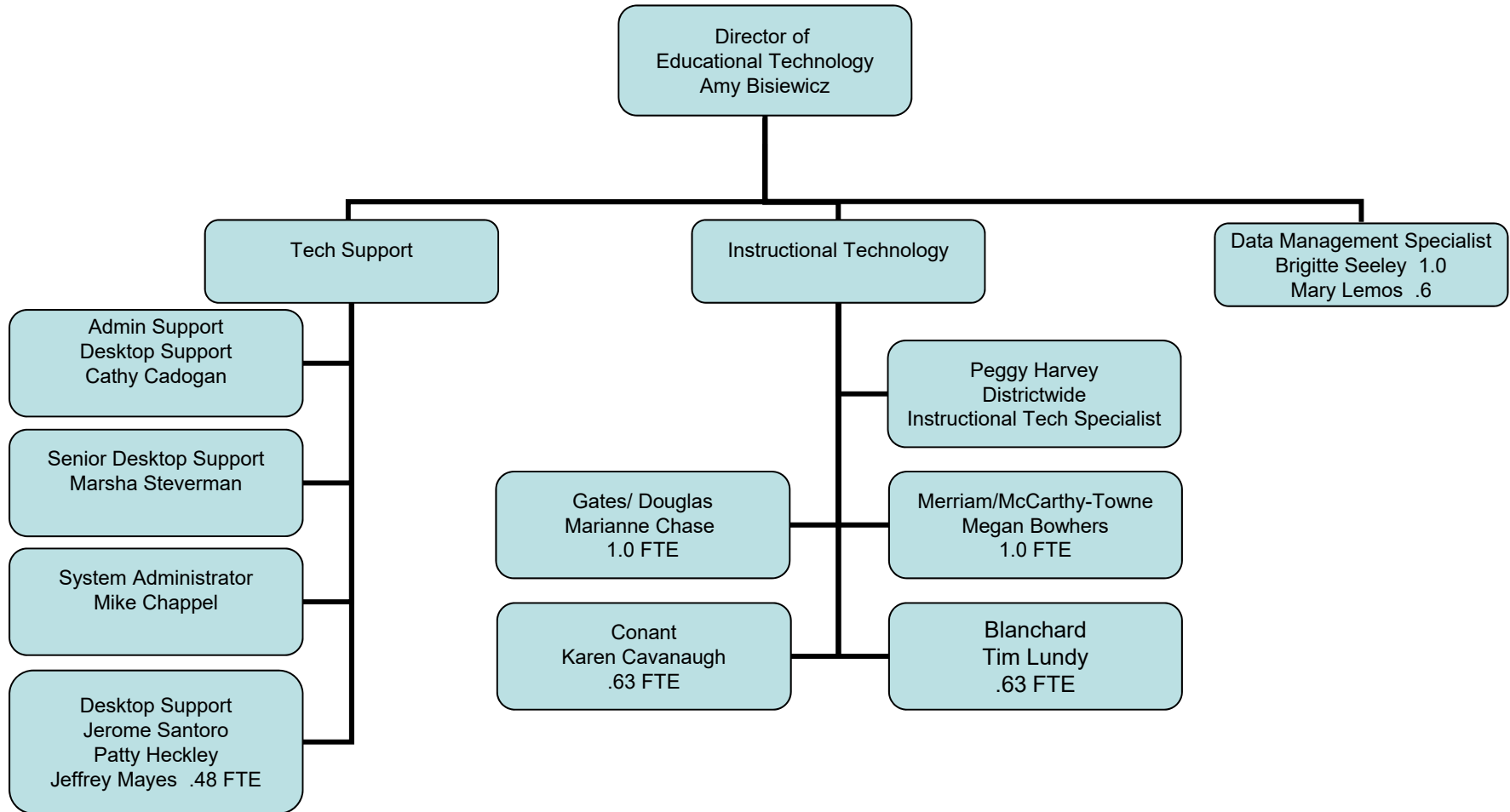
# Finance



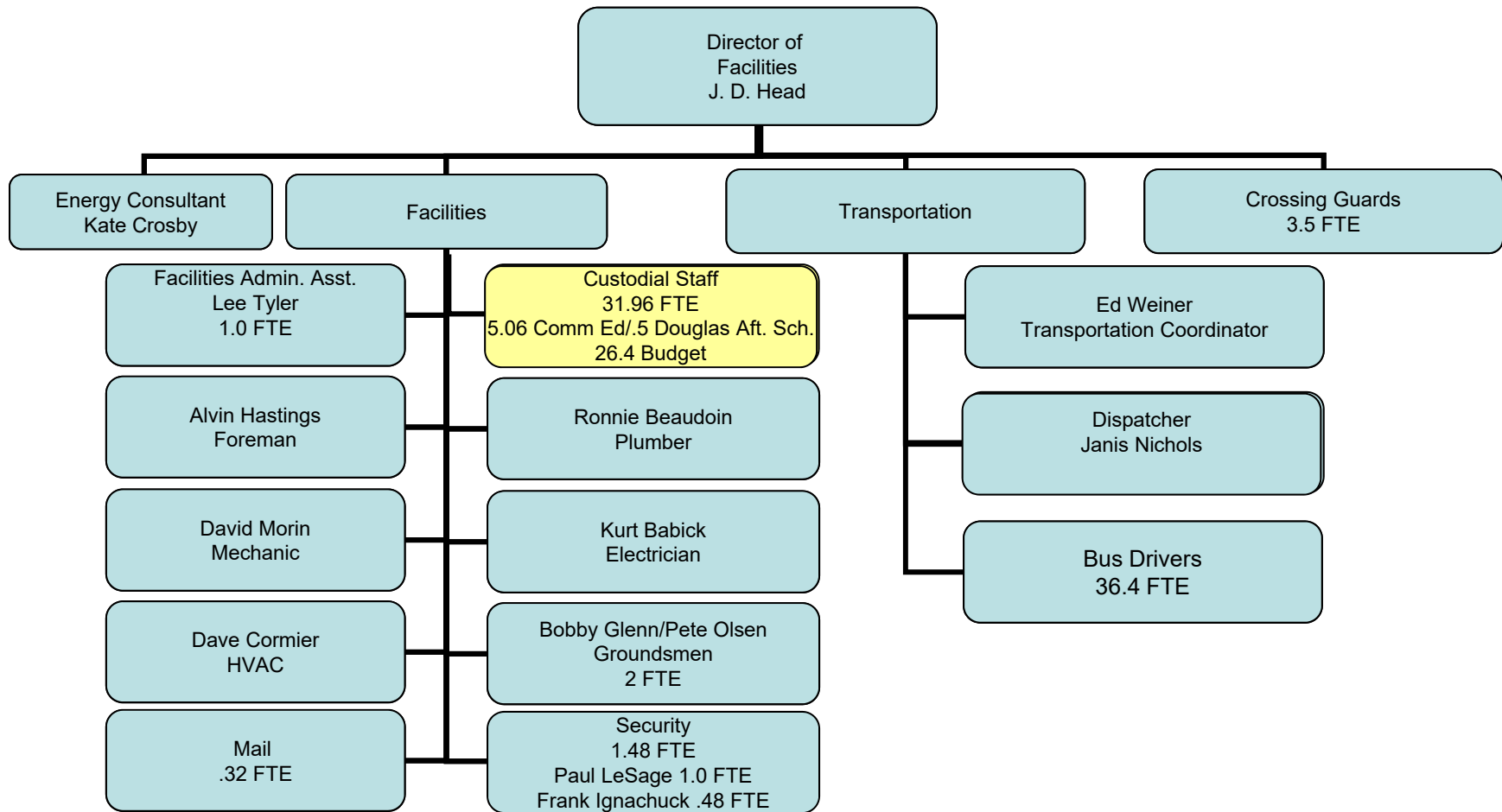
# Deputy Superintendent & Human Resources



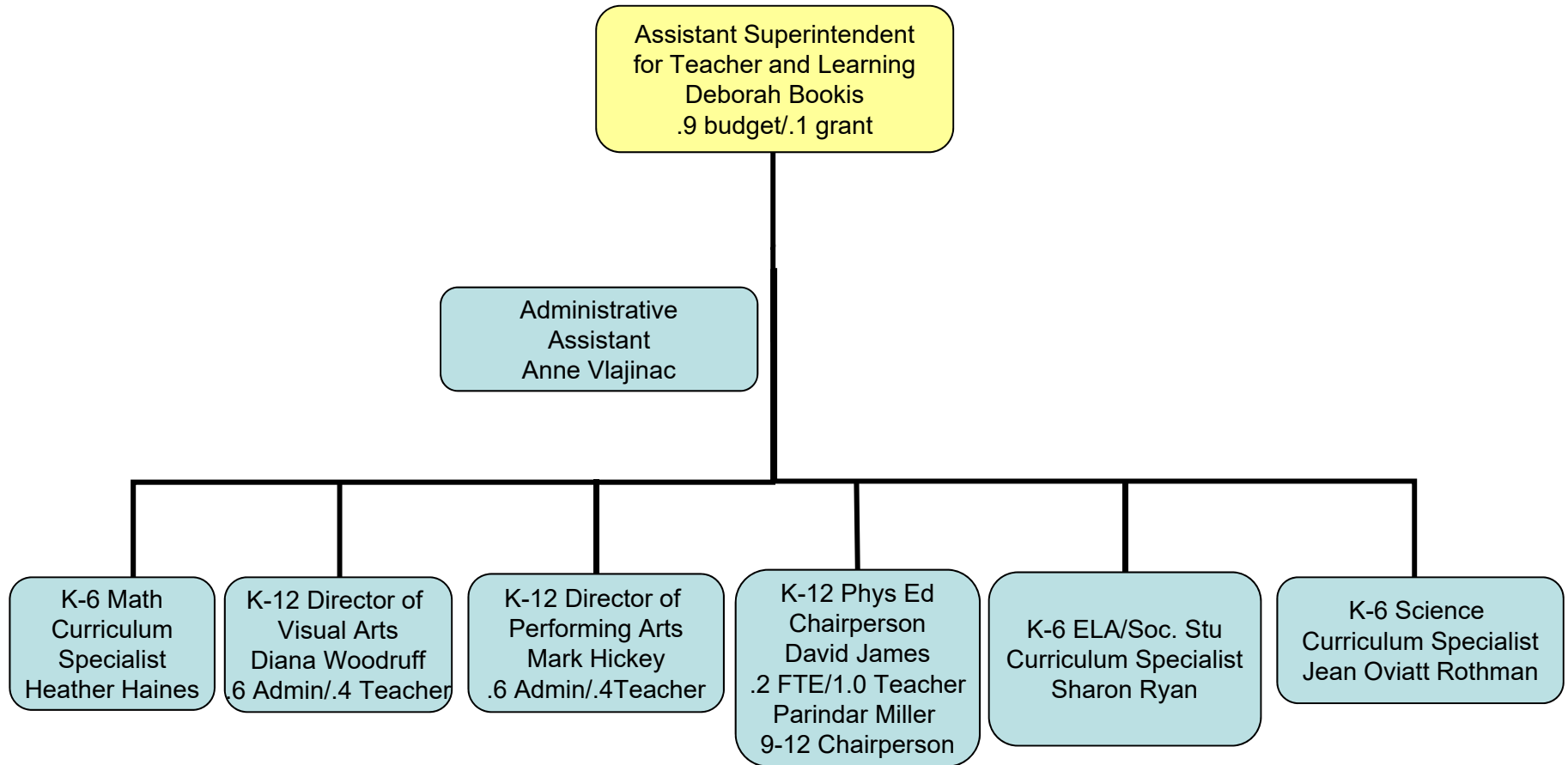
# Educational Technology



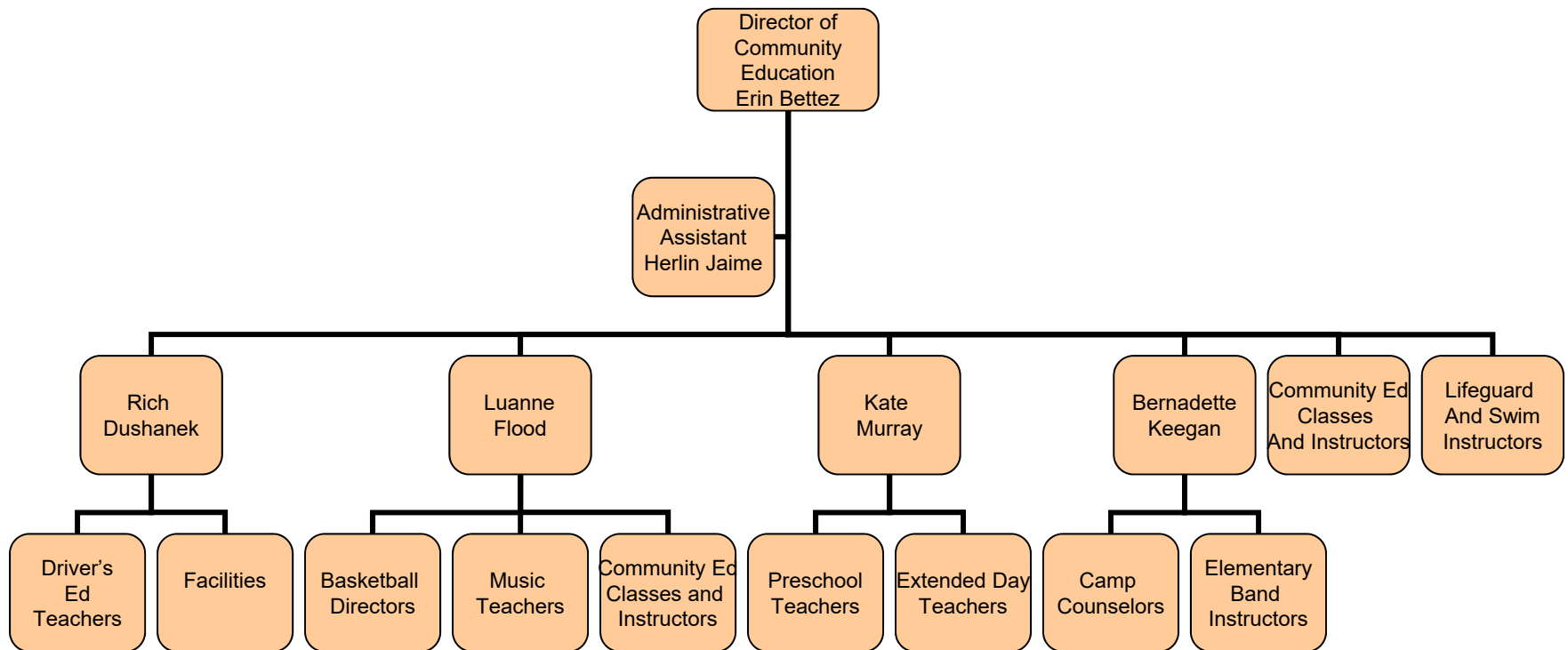
# Facilities and Transportation



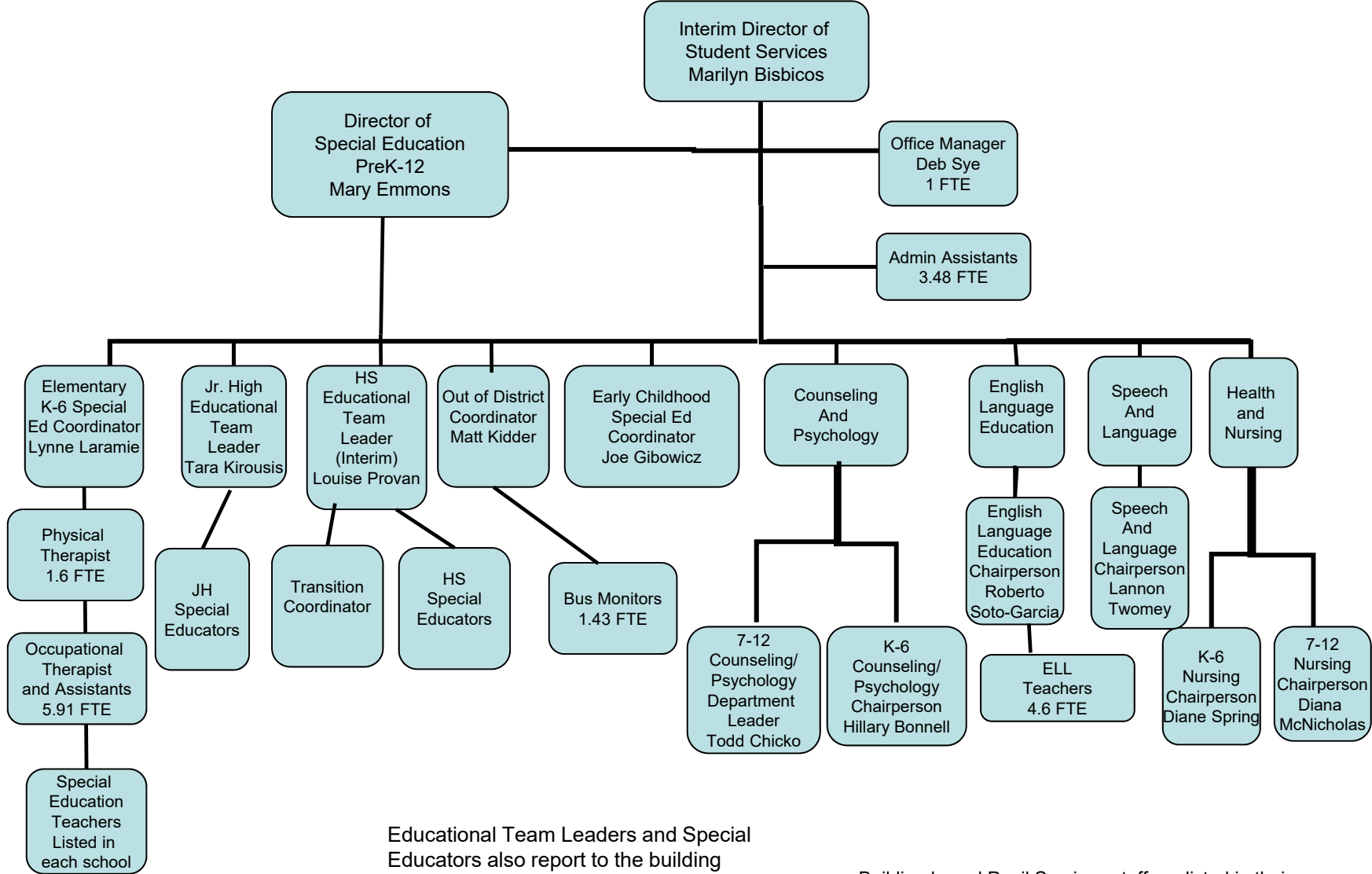
# Teaching and Learning



# Community Education



# Student Services

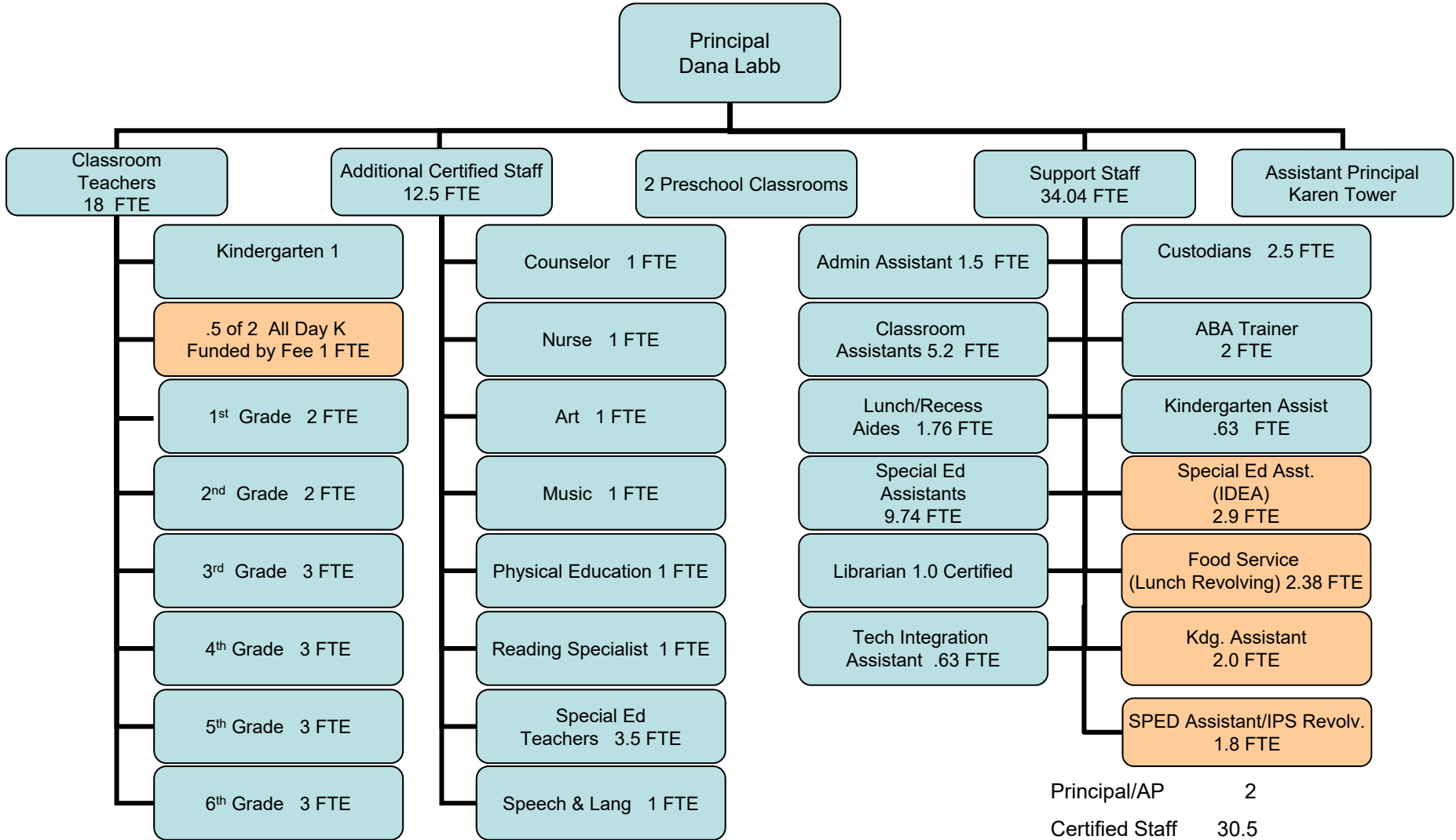


Educational Team Leaders and Special Educators also report to the building Principals.

Building based Pupil Services staff are listed in their buildings.



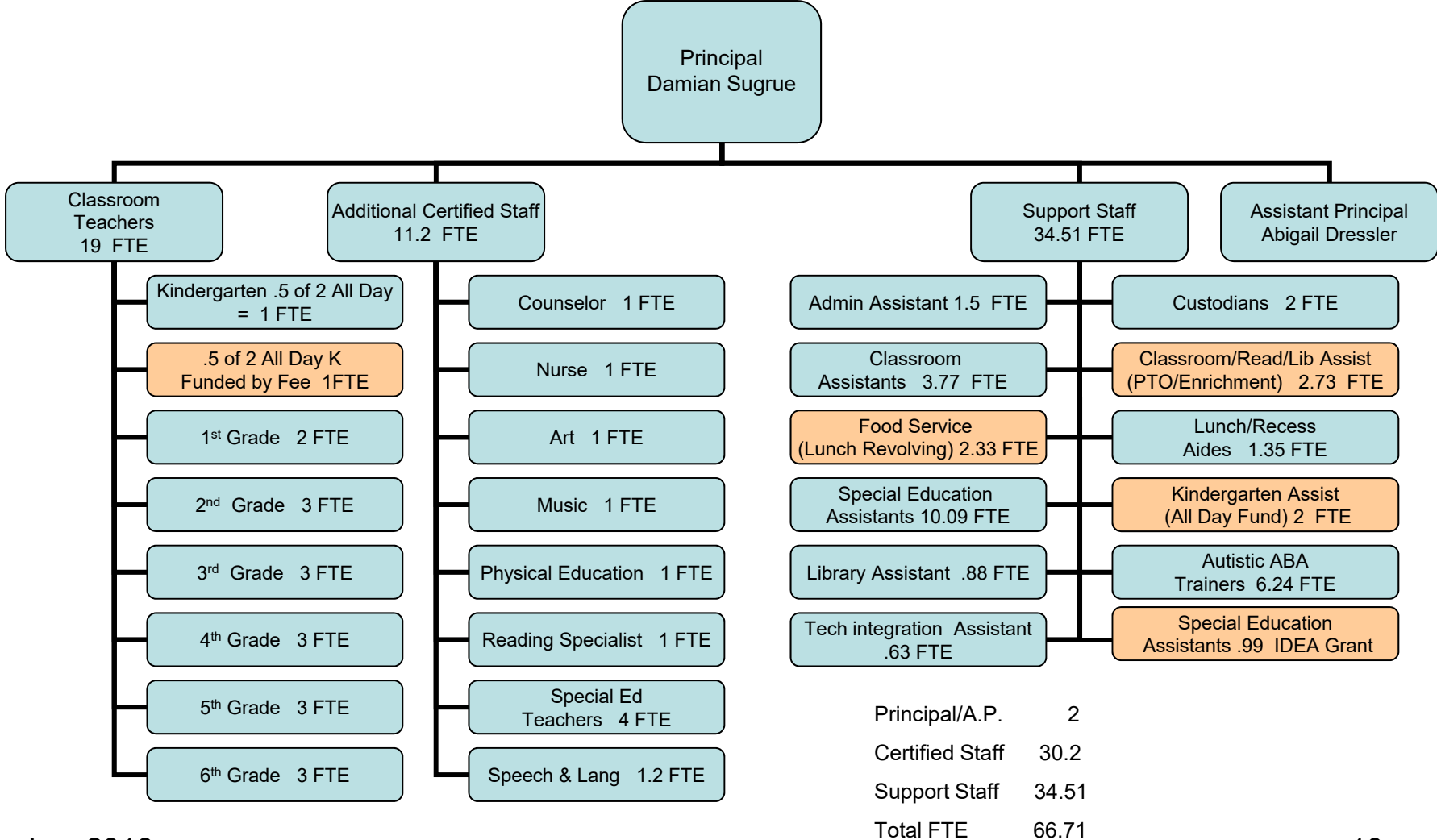
# Blanchard



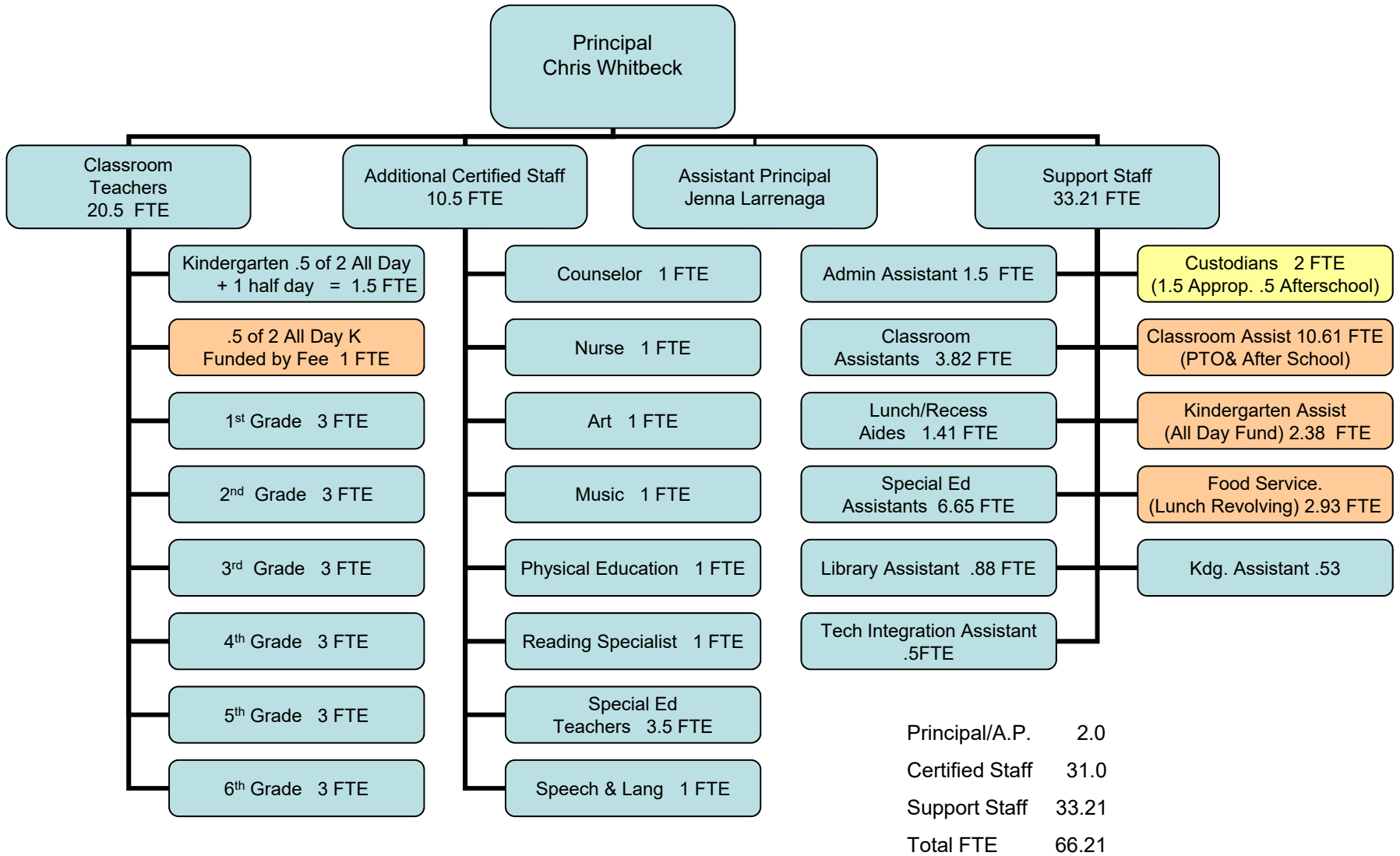
Principal/AP	2
Certified Staff	30.5
Support Staff	34.04
<b>Total</b>	<b>66.54</b>

Jan. 2016

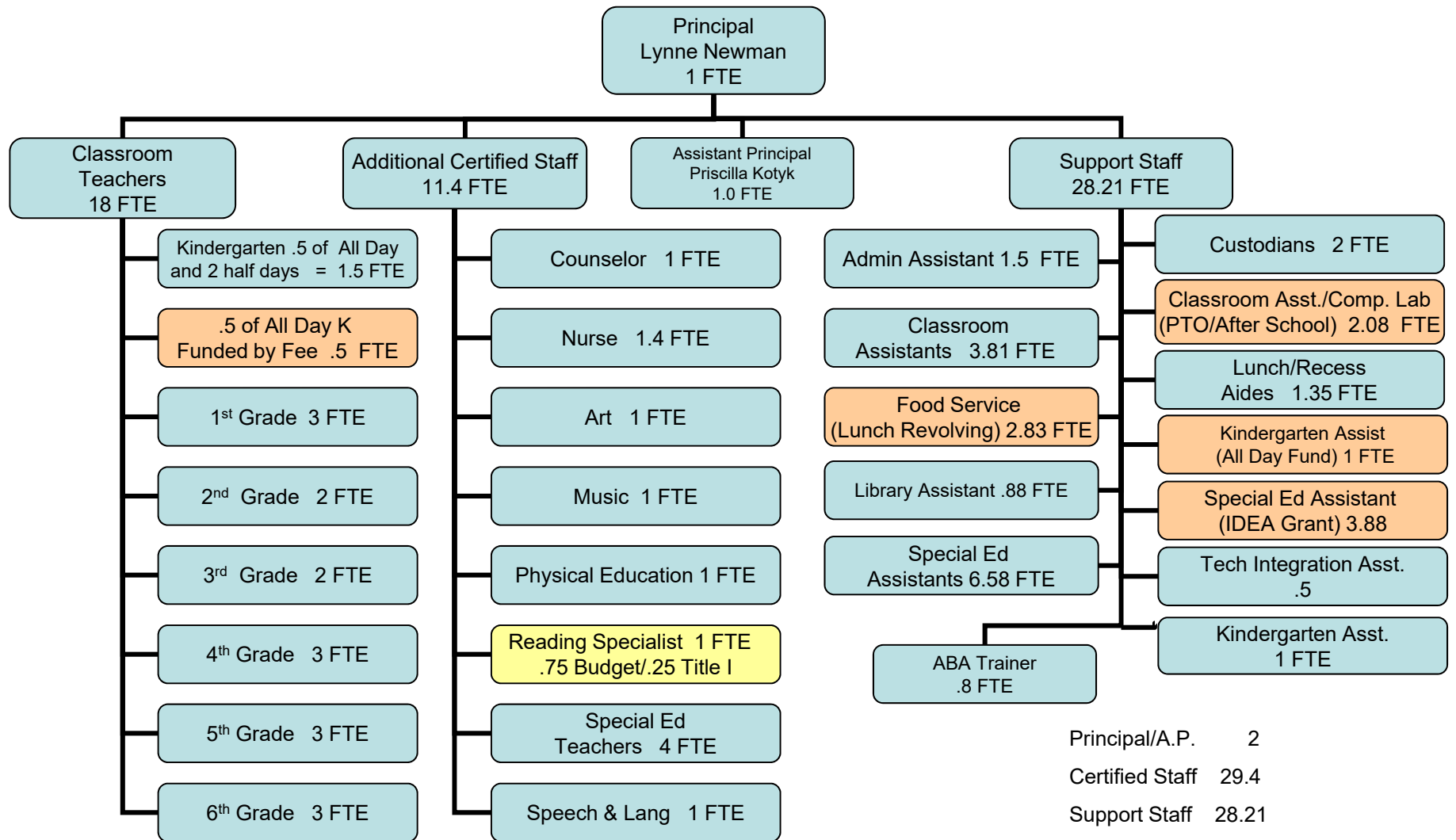
# Conant



# Douglas



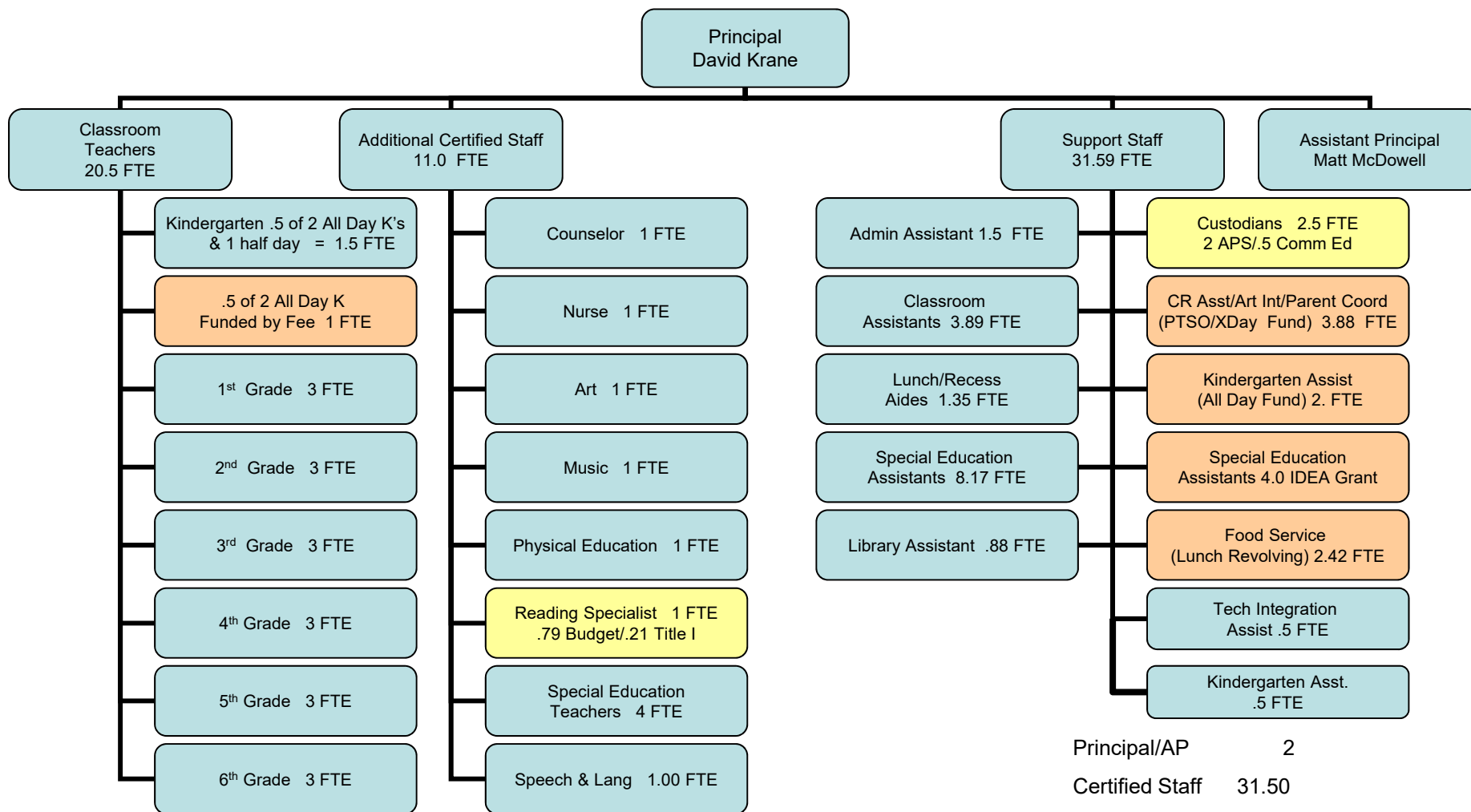
# Gates



Principal/A.P.	2
Certified Staff	29.4
Support Staff	28.21
<b>Total FTE</b>	<b>59.61</b>

Jan. 2016

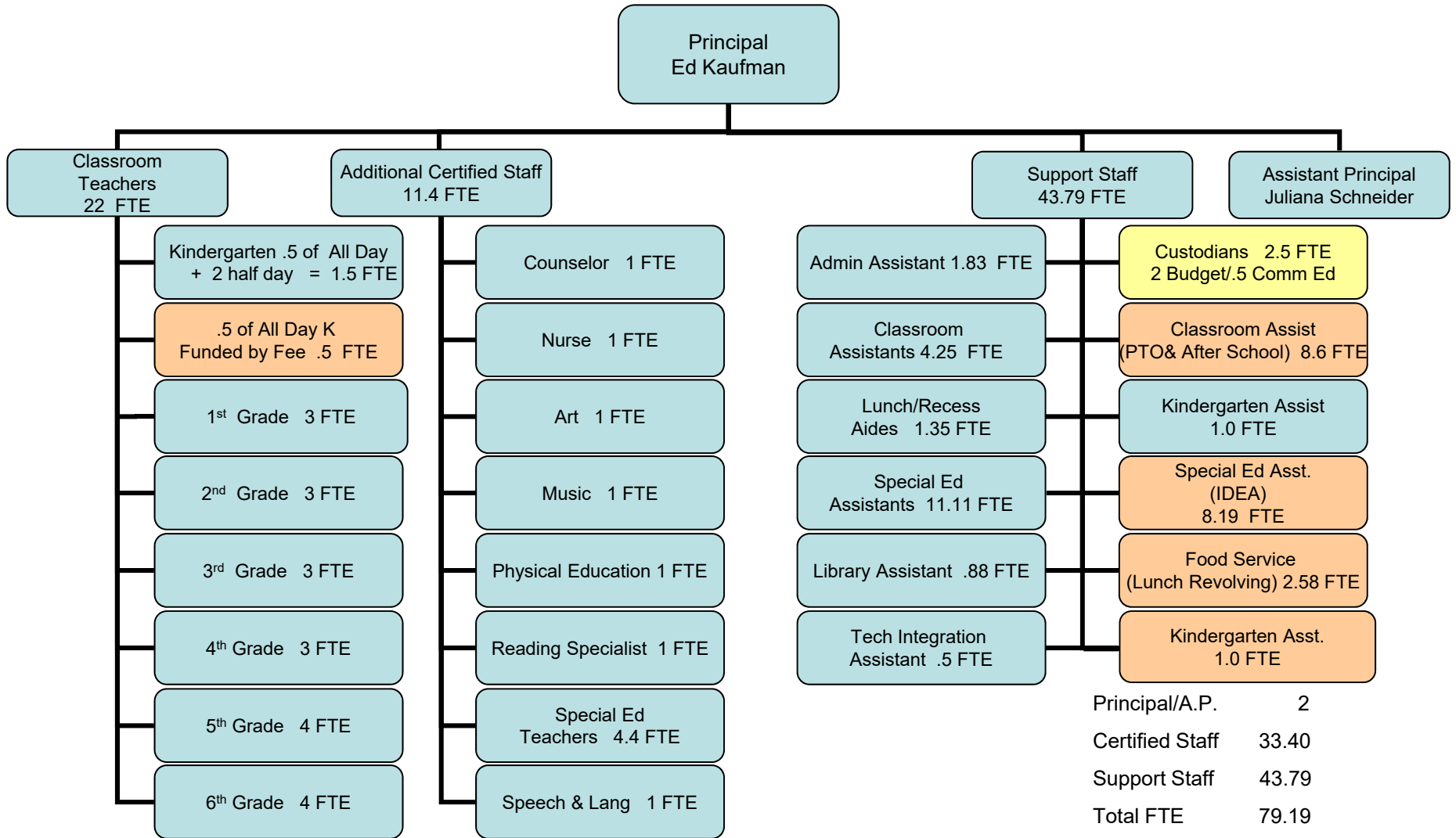
# McCarthy-Towne



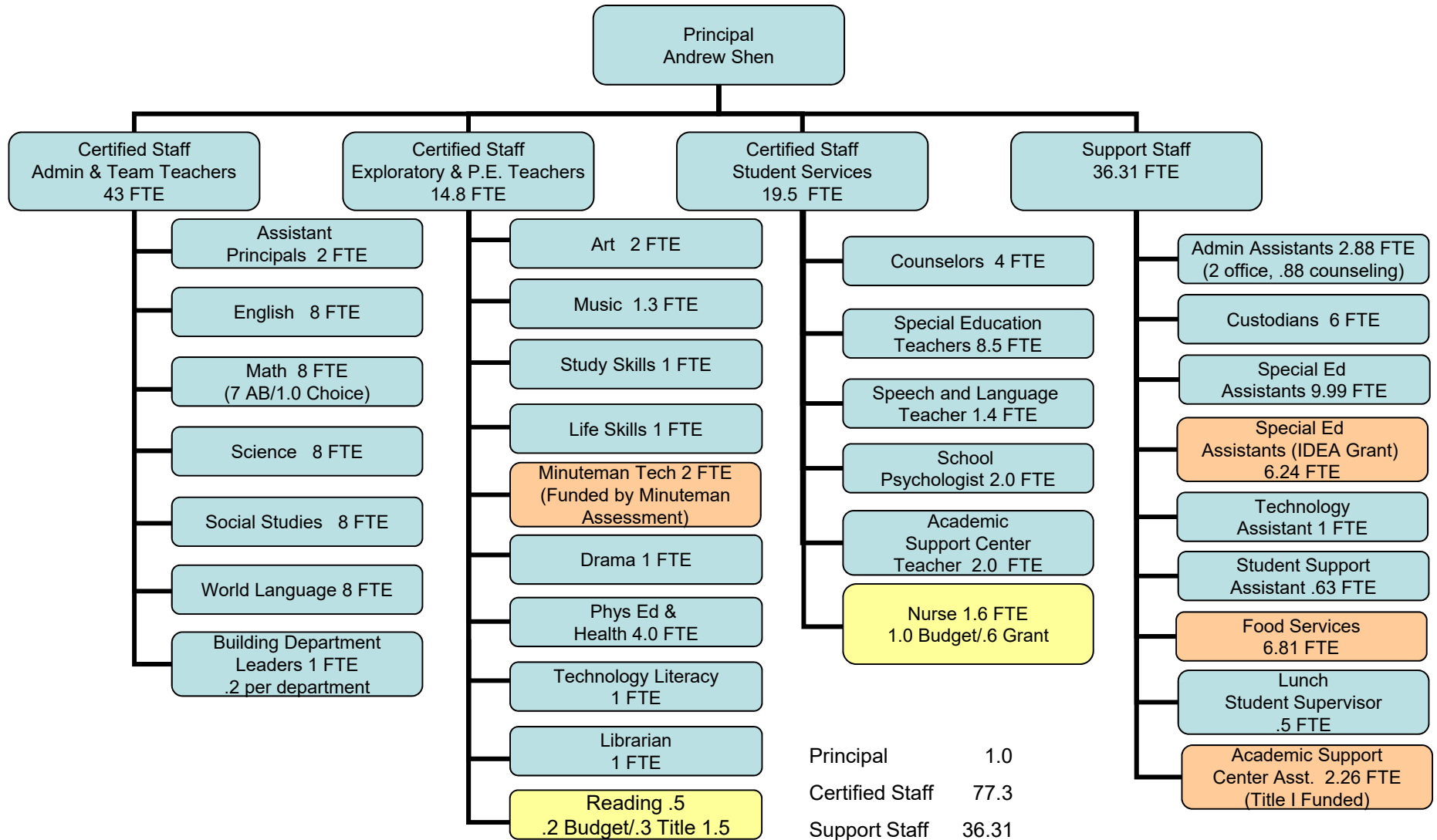
Principal/AP	2
Certified Staff	31.50
Support Staff	31.59
<b>Total</b>	<b>65.59</b>

Jan. 2016

# Merriam



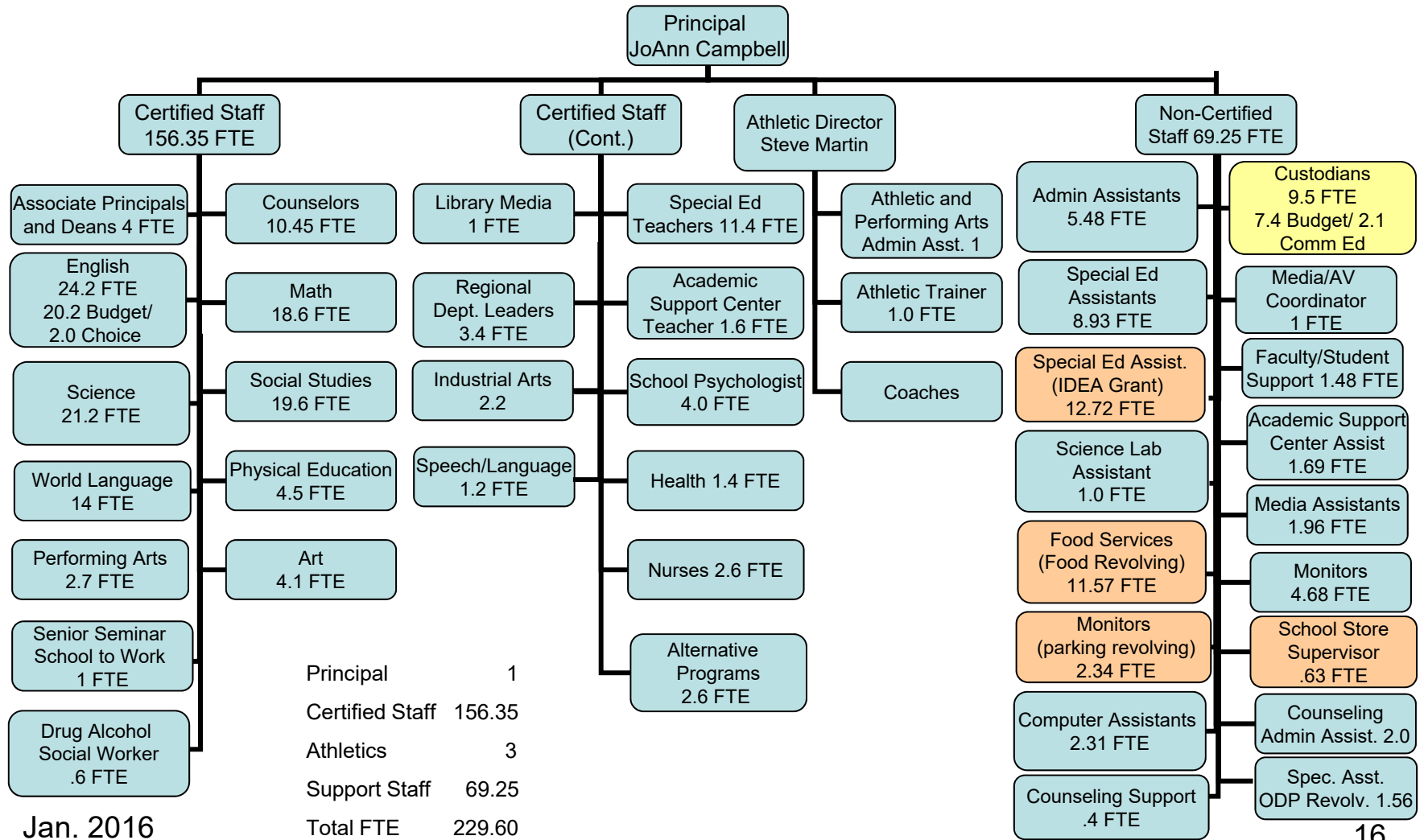
# R. J. Grey Jr. High



Principal	1.0
Certified Staff	77.3
Support Staff	36.31
<b>Total FTE</b>	<b>114.81</b>

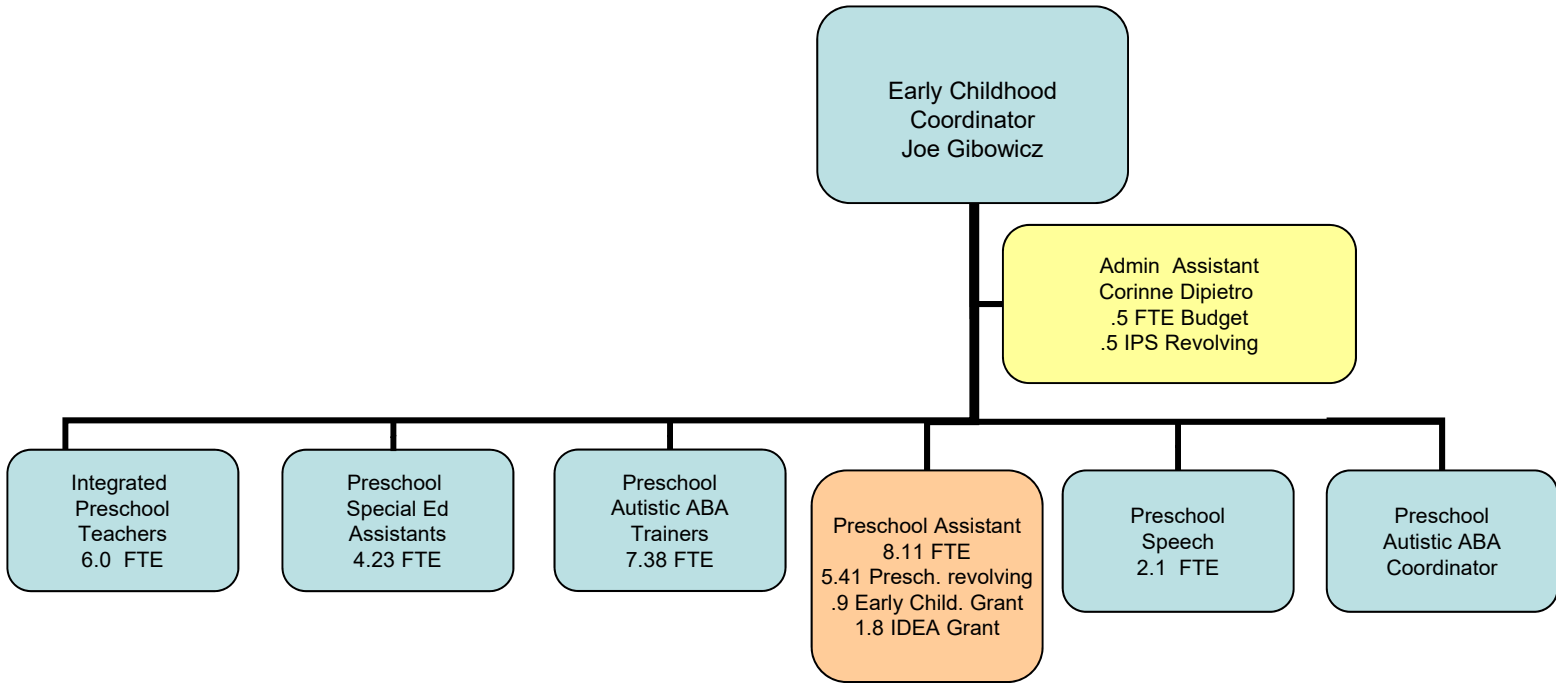
Jan. 2016

# Acton-Boxborough Regional High School





# Carol Huebner Preschool



Building based Pupil Services staff are listed in their buildings.